

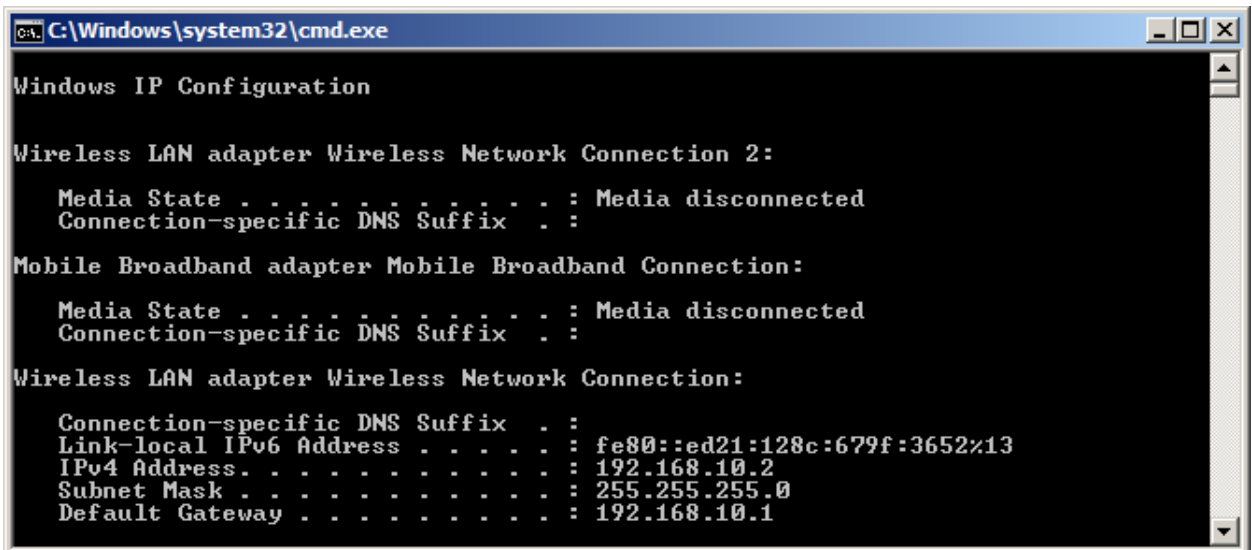
## Network Set Up

---

If you have multiple stations, you will need to set up the network for the POS systems. Each POS station will need to have a fixed IP address so they can communicate with each other. In addition, windows firewall needs to be turned off.

To set up the fixed IP address, do the following:

1. Find the current IP address, by open the command prompt and type in ipconfig



```
C:\Windows\system32\cmd.exe

Windows IP Configuration

Wireless LAN adapter Wireless Network Connection 2:

    Media State . . . . . : Media disconnected
    Connection-specific DNS Suffix  . :

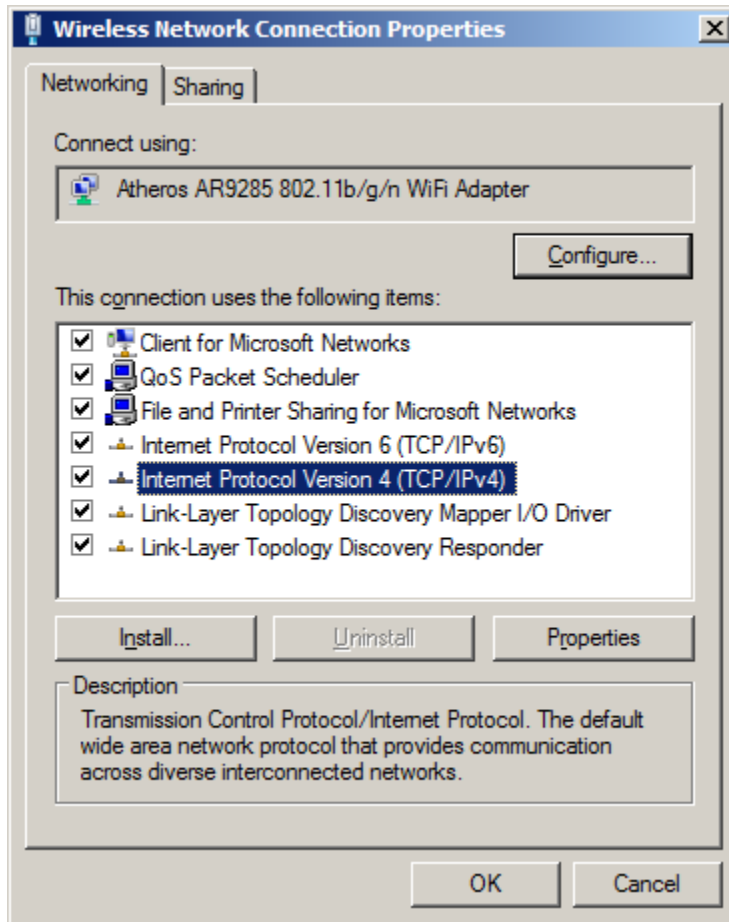
Mobile Broadband adapter Mobile Broadband Connection:

    Media State . . . . . : Media disconnected
    Connection-specific DNS Suffix  . :

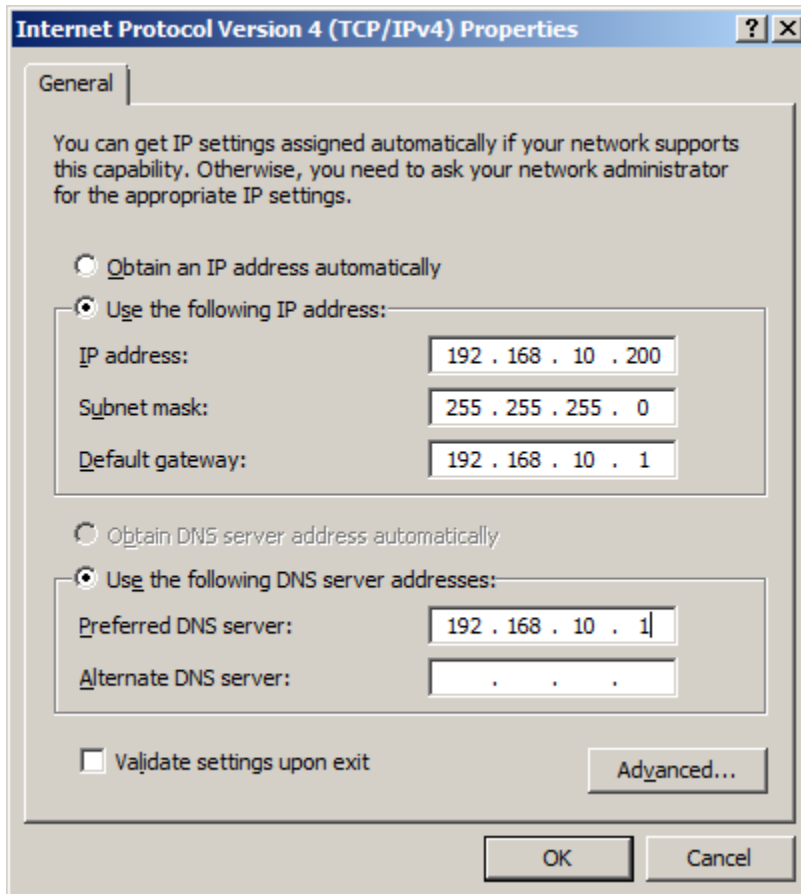
Wireless LAN adapter Wireless Network Connection:

    Connection-specific DNS Suffix  . :
    Link-local IPv6 Address . . . . . : fe80::ed21:128c:679f:3652%13
    IPv4 Address. . . . . : 192.168.10.2
    Subnet Mask . . . . . : 255.255.255.0
    Default Gateway . . . . . : 192.168.10.1
```

2. Find the Default Gateway, for example 192.168.10.1
3. Go to the Network Connections and open the property dialog for the connection being used, Select Internet Protocol (TCP/IP), click on Properties:



4. Enter the Fixed IP you want to use:



After the Fixed IP address is set up, go to c:\supermenu, open host.txt file and change the localhost to the fixed IP address of the server.