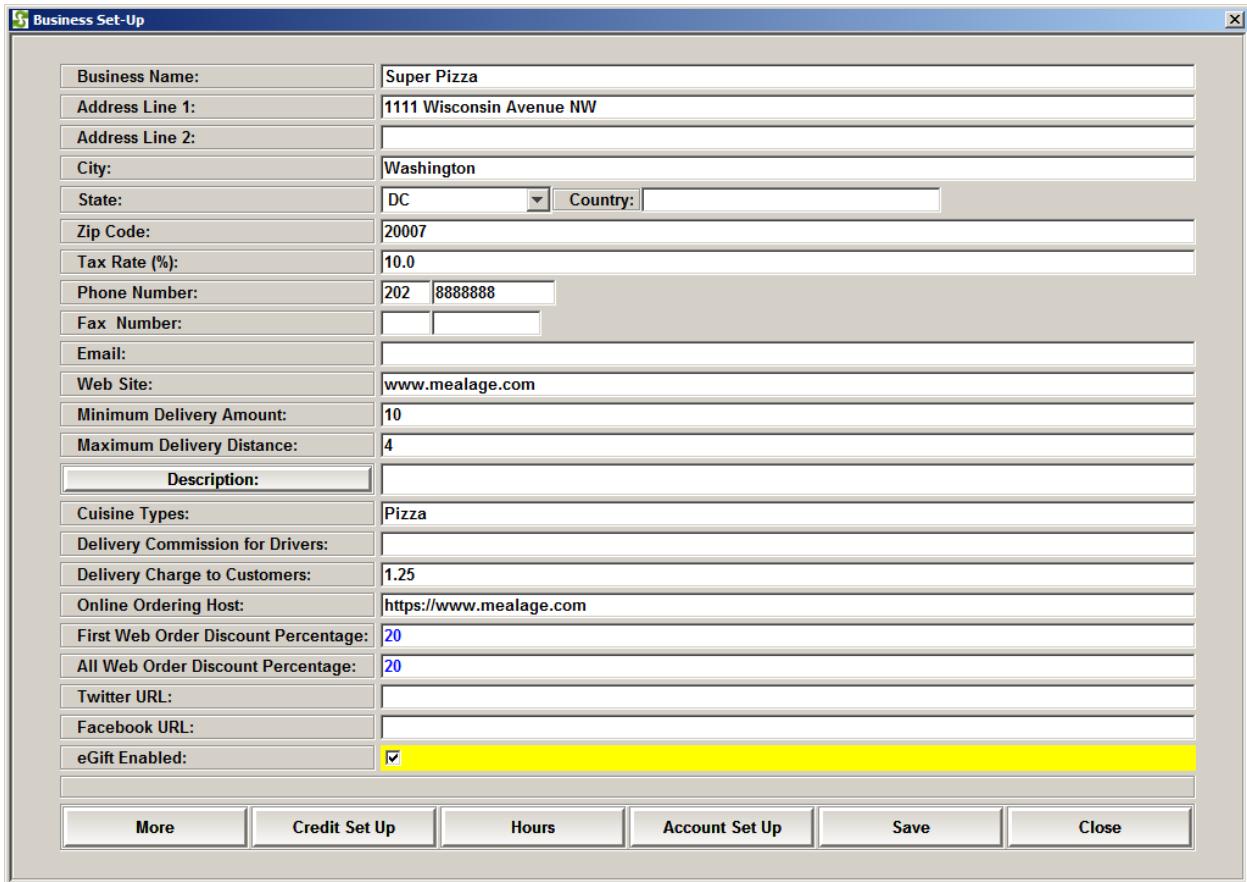


## Online Set Up

### Set up Online Account

1. Set up the online account, get a restaurant ID and online password
2. Enter the restaurant ID in the License screen of the POS, and then click on Online Set up to enter the Online Password
3. Go to Online Set up, click on Restaurant Set Up, enter the restaurant Information such as name, address, phone and website.
4. Please make sure the restaurant website and email address is entered, which will be used for communications between customers and restaurants
5. Enter the URL for FaceBook and Twitter, these URLs will be displayed on the online ordering website so the customers can go to the restaurant Twitter and Facebook pages by a single click
6. Enter the Web Order discount percentage
7. Enable eGift
8. Online Ordering Host is [www.mealage.com](http://www.mealage.com)



Business Name:	Super Pizza
Address Line 1:	1111 Wisconsin Avenue NW
Address Line 2:	
City:	Washington
State:	DC
Country:	
Zip Code:	20007
Tax Rate (%):	10.0
Phone Number:	202 8888888
Fax Number:	
Email:	
Web Site:	www.mealage.com
Minimum Delivery Amount:	10
Maximum Delivery Distance:	4
Description:	
Cuisine Types:	Pizza
Delivery Commission for Drivers:	
Delivery Charge to Customers:	1.25
Online Ordering Host:	https://www.mealage.com
First Web Order Discount Percentage:	20
All Web Order Discount Percentage:	20
Twitter URL:	
Facebook URL:	
eGift Enabled:	<input checked="" type="checkbox"/>

More    Credit Set Up    Hours    Account Set Up    Save    Close

Online website Set up:

1. Set up the front, background and logo images. Click on the buttons on the Online set up screen and select the images to upload the images for the website.



2. Set up Slide images. This is for adding multiple images to form a slide show on the front page of the web site. You can upload up to 9 images:

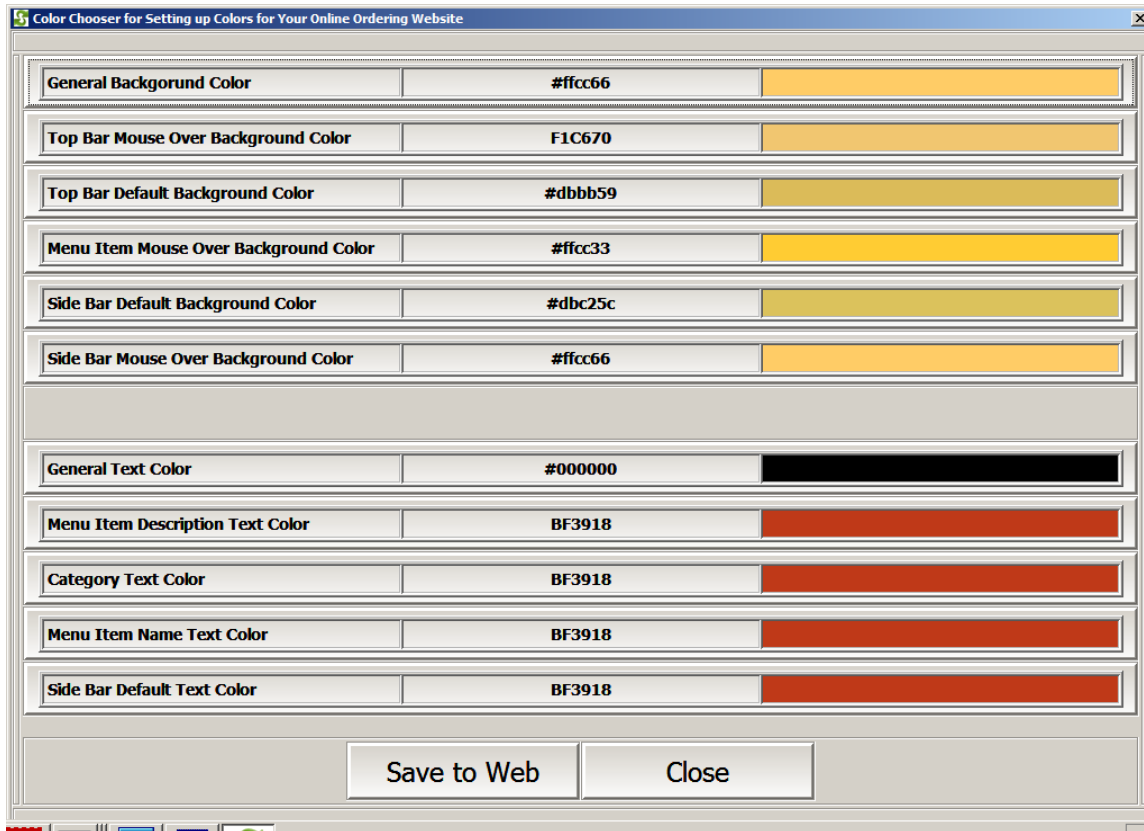


### Set up Menu & Menu Images:


1. Click on Menu Set up, click on Image next to the category name to upload the image for the category to the website
2. Click on Items to show all items, click on Image next to the item name to upload the image for the item to the website
3. After the images are uploaded, you can click on the Upload Menu to the Website

### Set Up Colors of the website:

1. The website can have 6 different colors for the background of the website
2. The website can have 5 different colors for the text color of the website
3. Click on the button to change the colors
4. Click on Save to Web to upload the colors to the website



### Launch Online Order Monitor

Click on the icon  Supermenu Online, The Online Order Monitor will start:

SuperMeu POS Internet Order Monitor

**File License Agreement Help & Support**

If the color of an order is blue, it is still not confirmed and you will hear the beeping sound until all orders are confirmed.

PIC#6-Wei Kong 571 2768546 (10:45 PM 0)

Pick-Up Order # 6  
*(Order Status: Placed)*  
 Placed at: 02/04/2012 10:44:57 PM

---

**(via the Internet)**  
*(Confirmed & Printed)*

---

Customer: Wei Kong(Company: www)  
 Phone: 571-2768546

Qty	Name	Requirements	Amount
1	12" Bacon Cheeseburger		\$15.14
		<b>Subtotal:</b>	\$15.14
		<b>Tax:</b>	\$1.51
		<b>Total:</b>	\$16.65
		<b>Payment:</b>	

Cancel Order	Go to Last Order	Refresh	Notes	Directions	Confirm & Print	Dispatcher	Hide
--------------	------------------	---------	-------	------------	-----------------	------------	------

Every time an online order arrives, the computer will make alert beeping sound and the program will come to the front. You can click on Confirm & Print button the print the order receipt and print to the kitchen.